



Set Streckenverbinder 180, Nut 8

Set Connecting Strip 180, Slot 8

**NEU
NEW**

Beschreibung Stahl zur stirnseitigen Verbindung von zwei Aluminiumprofilen ohne Profilbearbeitung

Material Stahl, verzinkt

Set 1 Streckenverbinder 180 - Nut 8,
4 Schrauben DIN 912 - M6 x 12,
4 Scheiben DIN 7349 - 6.4

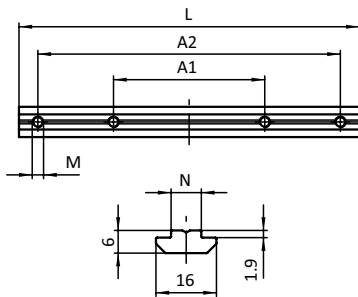
Liefereinheit 10 Stück

Description Steel End-to-end connection of two aluminum profiles without machining

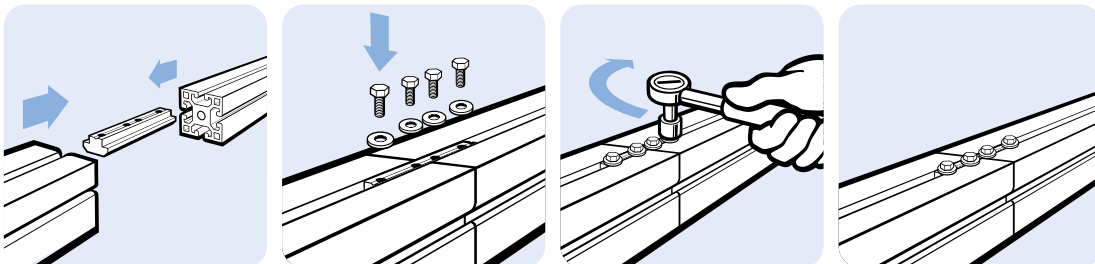
Material Zinc plated steel

Set 1 connecting strip 180, Slot 8,
4 screws DIN 912 - M6 x 12,
4 washers DIN 7349 - 6.4

Pack Quantity 10 pieces



Set Streckenverbinder 180 Set Connecting Strip 180	A1 [mm]	A2 [mm]	L [mm]	N	Größe Size	Gewicht [g] Weight [g]		Teil-Nr. Part #
	80.0	160.0	180.0	8	M6	134.0	B	096010S11





Set Streckenverbinder 180, Nut 10

Set Connecting Strip 180, Slot 10

Stahl

Beschreibung zur stirnseitigen Verbindung von zwei Aluminiumprofilen ohne Profilbearbeitung

Material Stahl, verzinkt

Set 1 Streckenverbinder 180, Nut 10,
 4 Schrauben DIN 933 (ISO 4017) - M8 x 16,
 4 Scheiben 8-FSt
 4 Scheiben DIN 7349 - 8.4

Liefereinheit 10 Stück

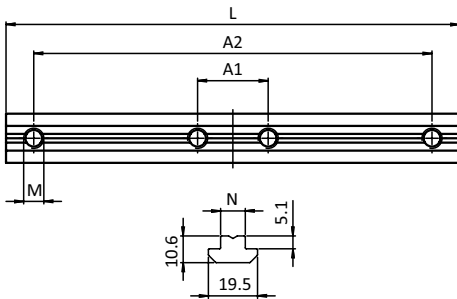
Steel

Description End-to-end connection of two aluminum profiles without machining

Material Zinc plated steel

Set 1 connecting strip 180, slot 10,
 4 screws DIN 933 (ISO 4017) - M8 x 16
 4 washers 8-FSt,
 4 washers DIN 7349 - 8.4

Pack Quantity 10 pieces



Set Streckenverbinder 180
 Set Connecting Strip 180

A1
 [mm]

A2
 [mm]

L
 [mm]

N

Größe
 Size

Gewicht [g]
 Weight [g]

Teil-Nr.
 Part #

28.0

158.0

180.0

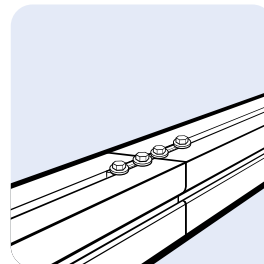
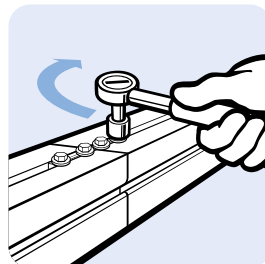
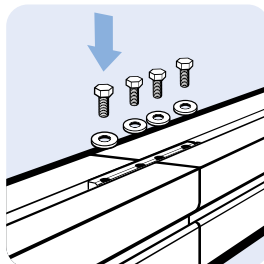
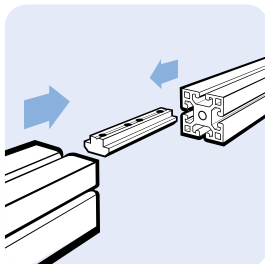
10

M8

264.0

B

096030S38





**NEU
NEW**

Streckenverbinder 50, Nut 8

Connecting Strip 50, Slot 8

Stahl

Steel

Beschreibung zur stirnseitigen Verbindung von zwei Aluminiumprofilen ohne Profilbearbeitung

Description End-to-end connection of two aluminum profiles without machining

Material Stahl, verzinkt

Material Zinc plated steel

Set 1 1 Streckenverbinder 50, Nut 8
2 Schrauben ISO 7380 Form B - M6 x 8,
2 Scheiben DIN 125

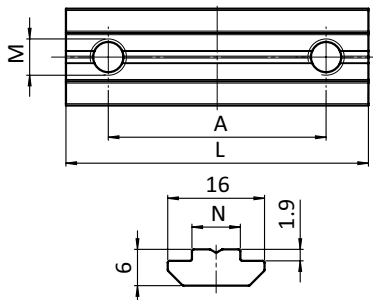
Set 1 1 connecting strip 50, slot 8,
2 screws ISO 7380 Form B - M6 x 8,
2 washers DIN 125

Set 2 1 Streckenverbinder 50, Nut 8
2 Schrauben DIN 913 - M6 x 10

Set 2 1 connecting strip 50, slot 8,
2 screws DIN 913 - M6 x 10

Liefereinheit 10 Stück

Pack Quantity 10 pieces



Streckenverbinder 50, Nut 8
Connecting Strip 50, Slot 8

A
[mm]

L
[mm]

N

Größe
Size

Gewicht [g]
Weight [g]

Teil-Nr.
Part #

Set 1

36.0

50.0

8

M6

35.0

B

[096010S46](#)

Set 2

36.0

50.0

8

M6

29.0

B

[096010S05](#)

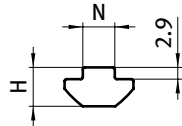
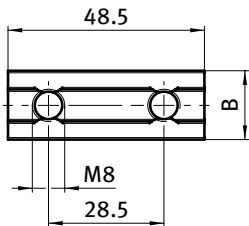


Doppelnutenstein für Pfostenkonsole

Double T-slot Nut for Floor Mount Base

mit Führungssteg, Stahl
Beschreibung Doppelnutenstein
Material Stahl, verzinkt
Liefereinheit 100 Stück
Extras verschiedene Längen mit mehreren Gewinden in unterschiedlichen Größen auf Anfrage

Self-aligning, Steel
Description Double T-slot nut
Material Zinc plated steel
Pack Quantity 100 pieces
Specials Different lengths with multiple threads in different sizes available on request



Doppelnutenstein Double T-slot Nut	N	B [mm]	H [mm]	Gewicht [g] Weight [g]		Teil-Nr. Part #
Nut 8 <i>Slot 8</i>	7.9	17.0	9.6	39.0	I	096060S54
Nut 10 <i>Slot 10</i>	9.8	19.0	10.6	49.5	B	096030S41

Passende Pfostenkonsole siehe Seite 428

Compatible floor mount base see page 428